

NEO-LATIN COMMUNITY

Romance languages, which descend from Latin, still function nowadays, in some situations, as **variations of the same 'language'**:

modern **LATIN** or **ROMANCE**.

Examples include: Memes or videos in Portuguese shared through social media in Madrid. Spanish tourists who don't know much English but can communicate in *itagnolo* at a hostel in Rome. Adverts in Italian on a bus in Barcelona. Catalans reading short texts in French at a museum in Paris. Romanians singing songs in Spanish or emigrating preferably to other Latin countries. Erasmus students from various Latin countries organising a party together, etc.

These examples show that inter-Latin communication, both spoken and written, is a reality, and that, to some extent, the speakers of

Romance languages still are a linguistic community.

However, Latin peoples lack a **common (Neo-) Latin language model** since Latin and later French have been displaced in international communication by a Germanic language, English.

PAN-ROMANCE PRECEDENTS



• **Dante Alighieri** (1265-1321) conceived, in the treaty *De vulgari eloquentia*, the design of an "illustrious" Romance variety based on the Italian dialects (because, according to him, these are closer to Latin and have better poets) but valid for all the Romance family, "our language".

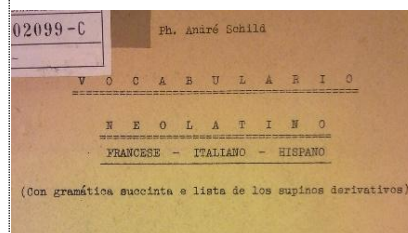
- The German writer **Stefan George** (1868-1933) wrote poems in an "easily understandable" mixed Romance variety.
- The Oxford University Romance scholar **Rebecca Posner** (1929-2018) declared in *The Romance Languages* (Cambridge University Press, 1996: 344) that:



"It is not impossible to conceive a ROMANCE INTERLANGUAGE"

- Since the 20th century, **multiple authors** in different places (Denmark, Switzerland, Portugal, Canada, Spain, Brazil, Italy, etc.) have independently developed variations of **the same Romance interlanguage**. This, therefore, is **not**

an artificial language like **Esperanto**. It's a standard language model, for Romance.



ROMANCE NEOLATINO



The various **Neo-Latin peoples** can communicate through their same 'language':

ROMANCE;

and the various **European peoples**, through their sister 'languages':

ROMANCE, SLAVIC, GERMANIC,...



www.neolatino.eu

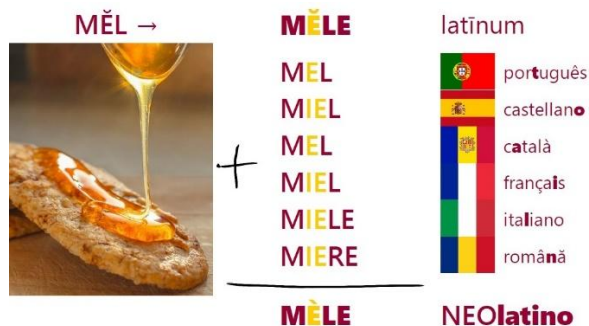
PAN-ROMANCE STANDARD

In order to ease and also dignify today's inter- and pan-Romance communication, the *Acadèmia Neolatina* has restored and updated the Latin language, the traditional common standard. The resulting language model is a **synthesis of the Romance variation** which aims to be **representative of the whole family**.

NEO-LATIN is a pan-Romance standard language, a new and **common** while, at the same time, **natural** and **flexible** Romance variety which eases communication for the whole neo-Latin world, complementing the regional standards that exist.

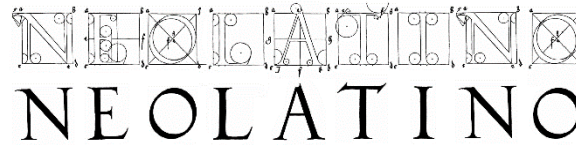
Uses and benefits:

- Understandable by 800 million people.
- Adaptable to meet specific needs and interests.
- Introduction into Rom. languages for foreigners.
- Bridge to present and old Romance languages and Latin, easier with knowledge of Neo-Latin.
- More effective than English for machine translation between Romance languages.
- It limits Anglo-Saxon imperialism.
- Shelter for speakers of vanishing Rom. languages.
- It enriches and improves Romance with contributions from all its varieties (expressive means, etc.).



PRINCIPLES OF DESIGN

With the aim of designing or **codifying a standard language model** that is maximally **effective** for communication and maximally **acceptable** by society, a **SCIENTIFIC** methodology has been developed in the context of applied linguistics.



Among the Romance forms, the one/ones with the most desirable traits is/are selected, considering more than 20 **CRITERIA** (with **equal weight**), both **linguistic** and **extra-linguistic**: forms should be encompassing, intelligible, regular, spread, concise, traditional, etc. In addition, the methodology provides some **RESOURCES** to find/develop the best forms or to manage and prioritize the selected forms.

NEO-LATIN ACADEMY

The design methodology of Neo-Latin has been developed since 2006 by the **doctor in Romance linguistics** Jordi Cassany-Bates, as well as the resulting essential grammar and dictionary. Multiple **linguists** and other professionals from various countries have helped to improve and expand these foundations. To continue the work, the **Acadèmia Neolatina** was formally established in 2025.



NEO-LATIN COMMUNITY

Neo-Latin is **well-regarded, studied and used** by hundreds of people from various countries, both European and American, who already form a growing and active **community**, with online groups, in-person meetings, pages, blogs, videos, applications, a magazine, books (also novels) and an encyclopaedia.

Neo-Latin is, therefore, a **developing reality**. In fact, it has been the subject of scientific research, including a congress at the University of Valencia (2022).

NEO-LATIN INSTITUTE

The *Instituto Via Neolatina* is an association which **promotes and teaches** Neo-Latin to expand its community and use. It is active since 2008 and was formally established in 2025. **Contact us and join!** ☺ instituto@neolatino.eu

EUROPEAN COMMUNICATION

The Institute also collaborates with parallel movements for other European language families (the most advanced being **Slavic**: *Interslavic* or *medžuslovjansky*). Complementing each other, they offer Europe an alternative **linguistic policy**, which is richer, more neutral and more respectful with language diversity, as well as natural and workable.

